

DISCOVERY VISIT + SPARTAKUS

Maintenance and Reliability program



The success of a Maintenance and Reliability program is greatly accelerated with Laurentide's Discovery Visit. We can help you gain valuable insight into your organization and provide ideas that will help jump start your maintenance, reliability and asset management initiatives.

Approach

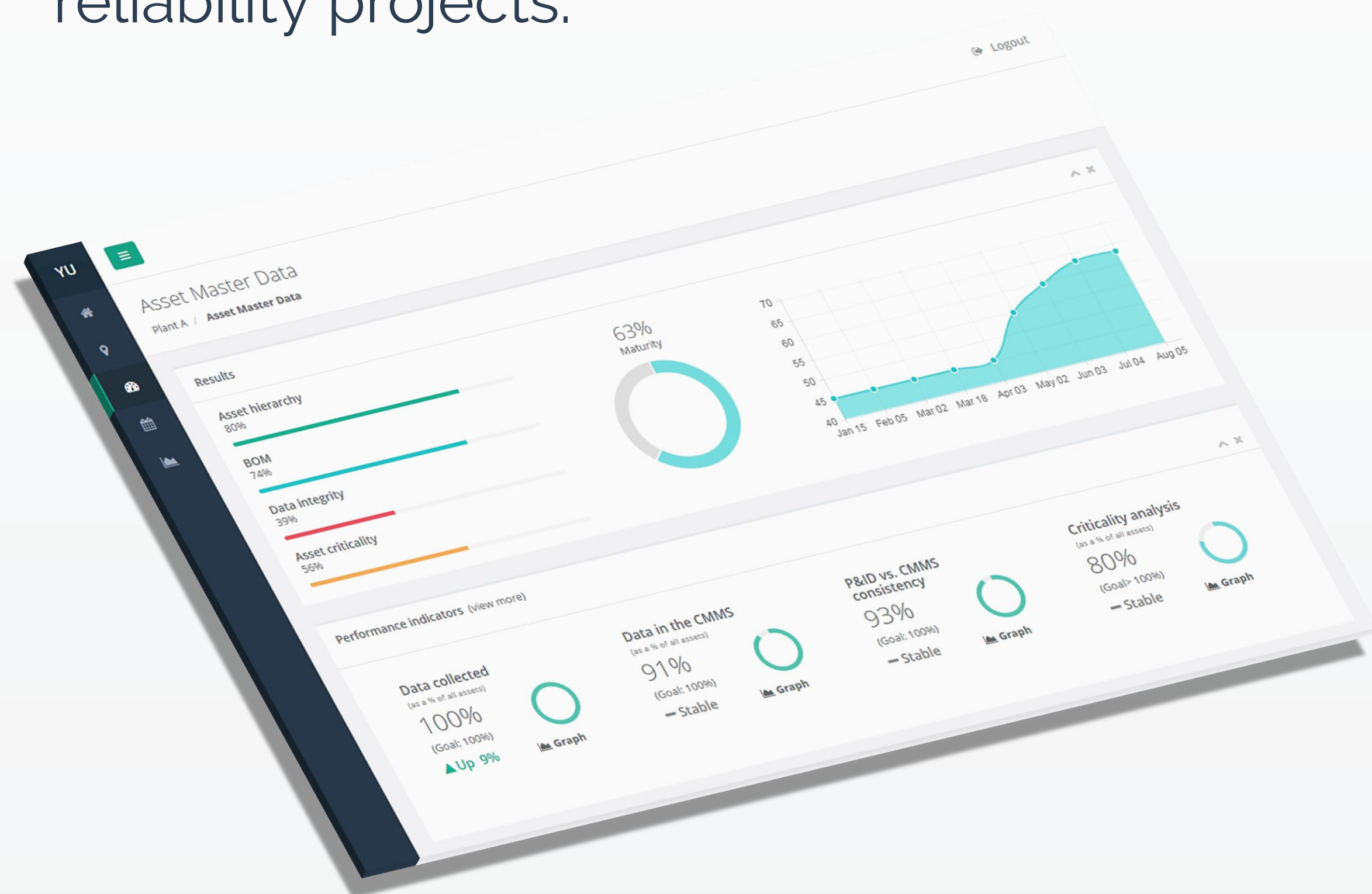
Laurentide Controls' Discovery Visit is a 2 to 3 day onsite evaluation of your maintenance and reliability program. Through interviews with key personnel, analysis of the various processes in place and available data & tools, our experts compare your current practices to recognized world class standards in your industry.

Spartakus, a unique application. For you.

- Monitor your performance through 7 pillars of reliability excellence
- Compare yourselves to the best and see what others are doing
- Manage your reliability projects while following the roadmap to reliability excellence we build for you
- Consult your key performance indicators, update them and trend them
- Observe the improvement of your plant's maturity while you are completing reliability projects.



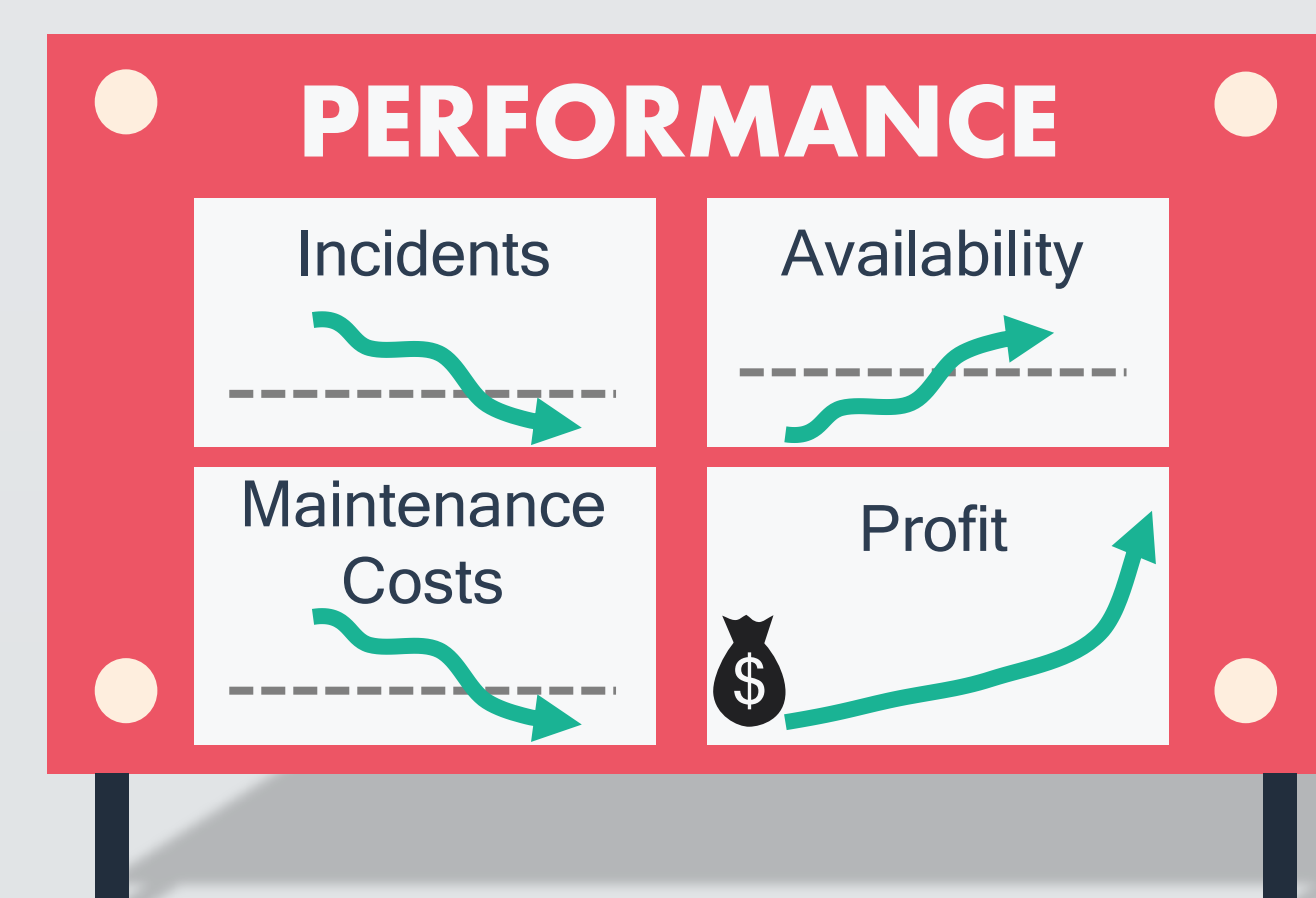
Responsive and available on every platform



Value

The Discovery Visit combines evaluation, analysis and education so you can have a quick and thorough understanding of your maintenance and reliability program's current state. It is the first step in the design and implementation of your short and long term improvement strategies.

TRAINING
ASSET MASTER DATA
ASSET CRITICALITY
RELIABILITY STRATEGIES
WORK MANAGEMENT
CONDITION MONITORING
PM/TPM
ASSET HEALTH
MATERIALS MANAGEMENT
CONTINUOUS IMPROVEMENT
DEFECT ELIMINATION
EXECUTIVE SUPPORT
HUMAN CAPITAL MANAGEMENT
ASSET MANAGEMENT



Scope of Work

Discovery – Laurentide Controls meets with key personnel to discuss the current M&R practices, processes, tools and data. In addition to the meetings, we conduct an informal system and data review in order to compare it to industry best practices.

Education - Laurentide Controls conducts a half-day M&R best practices awareness session for client personnel to provide a view of “what good looks like”. KPI are included in Spartakus and can be updated and monitored.

Findings & Recommendations - Laurentide Controls provides access to Spartakus, with detailed findings and specific opportunities for improvement. We also provide recommendations on how to address these opportunities. Recommendations are organized in a timeline and include items that can be done internally as well as items where Laurentide Controls can provide assistance. These projects are easily editable in Spartakus.

7 Pillars - Laurentide Controls evaluates current practices against 27 categories of the industry best practice standards and provides a baseline scorecard to portray the current performance:



Participants

Laurentide Controls requests that the following staff be available for interviews and discussions during the site visit:

Maintenance Manager
 Reliability Engineer
 Maintenance Supervisor / Superintendent
 Planner

Scheduler
 Operations Manager / Superintendent
 Storeroom Manager
 CMMS Expert

Engineering Manager
 New Construction Manager
 Plant Manager

Duration and Schedule

An outline of the expected discovery visit activities is shown below:

